

MONTHLY MEMBERSHIP PROGRESS REPORT

District 16 J

Results as of: 6/30/2020

GMT:

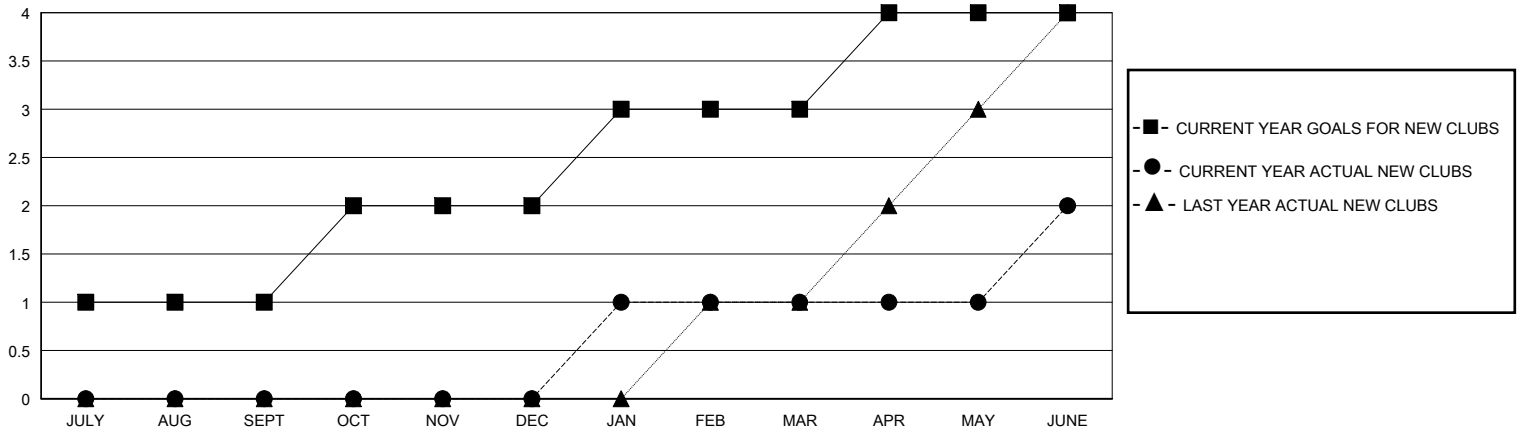
LOCATION NEW JERSEY

GMT CA

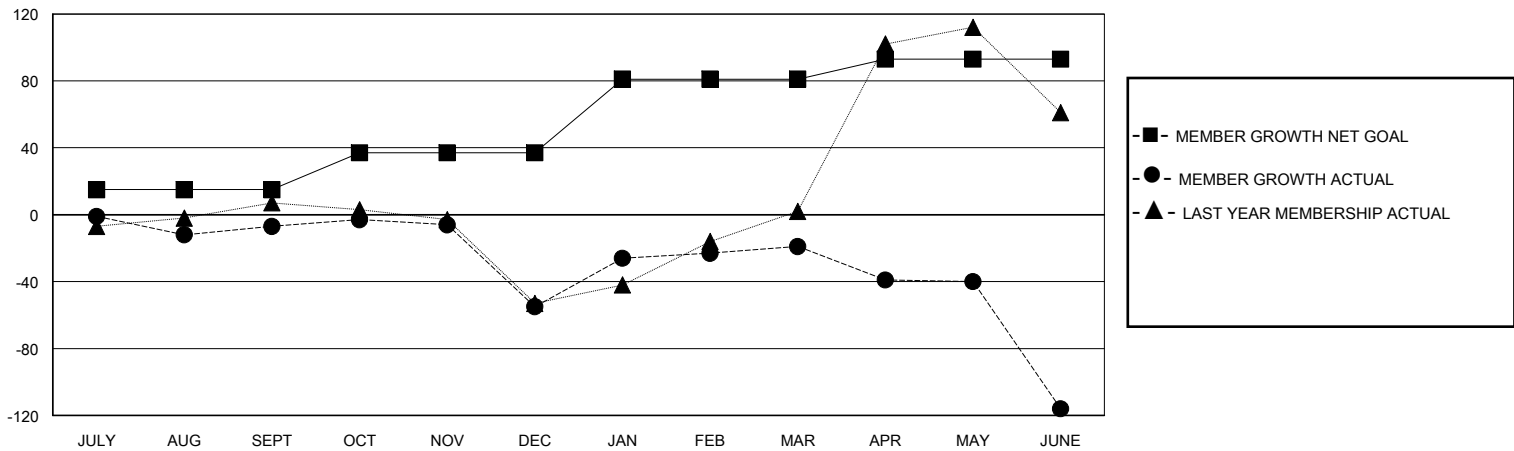
Clubs			
RESULTS FOR 2019-2020			
QUARTER	NEW CLUB GOAL	NEW CLUBS	DROPPED CLUBS
JULY/AUG/SEPT	1	0	0
OCT/NOV/DEC	1	0	2
JAN/FEB/MAR	1	1	1
APR/MAY/JUNE	1	1	0

Members			
RESULTS FOR 2019-2020			
QUARTER	MEMBER GROWTH NET GOAL	MEMBER GROWTH ACTUAL	DROPPED MEMBERS ACTUAL (including transfers)
JULY/AUG/SEPT	15	30	33
OCT/NOV/DEC	22	25	71
JAN/FEB/MAR	44	69	22
APR/MAY/JUNE	12	50	145

GOALS AND ACTUAL NEW CLUBS CUMULATIVE



GOALS AND ACTUAL MEMBERS CUMULATIVE



DROPPED CLUBS: 3

29 CLUBS OF 62 ADDED 1 OR MORE NEW MEMBERS

GENDER DISTRIBUTION

MALE 891 (62.31%)
FEMALE 539 (37.69%)

DROPPED MEMBERS

DECEASED	17
CLUB CANCELLED	12
OTHER	242
TOTAL	271

[CLICK HERE FOR CUMULATIVE MEMBERSHIP DATA](#)

TOTAL FAMILY UNIT MEMBERS	329
FAMILY MEMBERS PAYING HALF DUES	171